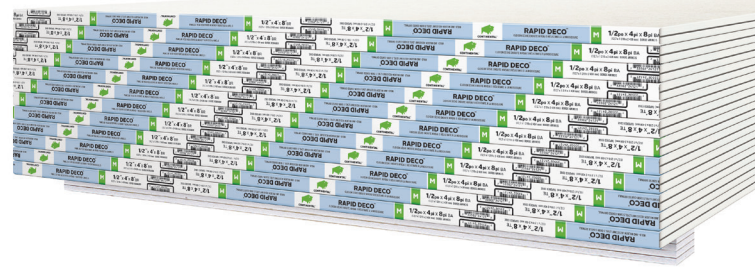




CONTINENTAL™
BUILDING PRODUCTS



Applications

Bison Board Rapid Deco Mold Defense drywall is the best solution for areas specified for a Level 5 finish, such as:

- Hotel lobbies and interior public spaces
- Board rooms and conference rooms
- Office atriums and hallways
- High-end residential housing
- Any area where critical lighting or gloss paints are specified in which a smooth finish is desired

Advantages

- Provides an equivalent to a field-applied Level 5 finish in the same number of steps as a Level 4 finish
- Mold and mildew resistance
- Creates a uniform surface and the highest-quality finish
- Provides consistent job results
- Minimizes jobsite application labor and reduces cost over a field-applied Level 5 finish
- Installs in the same manner as traditional drywall — no special tools or enhanced skills required
- Superior Level 5 results in less time
- Very low flame spread
- Meets Level 3 for abrasion resistance per ASTM C1629

MOLD- AND MILDEW- RESISTANT LEVEL 5 FACTORY-FINISHED DRYWALL

BISON BOARD™ RAPID DECO® MOLD DEFENSE®

Continental Building Products Bison Board Rapid Deco Mold Defense factory-finished drywall is a mold- and mildew-resistant gypsum board pre-finished with a specially formulated material to facilitate finishing to a Level 5 finish. This material is factory-applied to provide a consistent and uniform finish.

Rapid Deco Mold Defense is installed in the same manner as traditional drywall and finished with Rapid Deco joint compound to easily and quickly produce a Level 5 finish (Please refer to the Rapid Deco joint compound submittal sheet for technical information).

Rapid Deco Mold Defense is designed for use in applications that require direct mechanical attachment to wood or metal wall or ceiling framing, or attachment to existing surfaces using fasteners or adhesives. May also be used as a thermal barrier in roof assemblies when specified by the roofing manufacturer.

While Rapid Deco Mold Defense has some inherent fire-resistant characteristics, this product should not be used to provide the levels of fire resistance required by various building codes and standards. For fire resistance, use Rapid Deco Mold Defense Type X drywall. When properly sealed and used in a certified sound-rated assembly, Rapid Deco Mold Defense will contribute to the required sound transmission classification (STC) values.

Continental's Mold Defense products are compliant with the treated article exemption of FIFRA as determined by the U.S. Environmental Protection Agency (EPA). Rapid Deco Mold Defense offers enhanced protection against the growth of mold and mildew on its surface and in its core compared to ordinary drywall products. Under controlled testing conditions, it achieved an average panel score of 10 out of a possible 10 using ASTM D3273.*

Note: Rapid Deco Mold Defense is suitable for interior applications only and should not be used where temperatures exceed 125 °F for extended periods or in areas of extreme humidity. Likewise, the board should be protected from exposure to adverse conditions during storage and construction.

Rapid Deco System: Consists of a factory-finished Level 5 drywall and a specially formulated, matching joint compound. Used together, they create an equivalent substitution to a field-applied Level 5 finish (per ASTM C840).

JOB NAME: _____

CONTRACTOR: _____

DATE: _____

Sustainability

Can contribute to the U.S. Green Building Council's LEED Credit Qualification in several credit categories to assist in obtaining LEED certification.

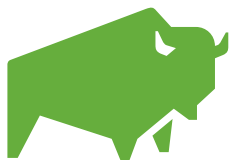


Limitations: Rapid Deco is designed to replicate a field-applied skim coat. A skim coat will not approximate a plastered surface. For an entirely smooth, blemish-free surface, a veneer plaster or hard-wall plaster system is recommended. See Gypsum Association publication GA-214 for additional details on skim coating.

Continental cannot control the workmanship of the installed or finished product. Finish satisfaction will only be obtained when proper installation practices are followed and products are properly used. Care must be taken to ensure all joints, trim and fasteners are properly treated and are flat to the plane of the board surface.

Continental cannot control the painting and decorating process. Architectural specifications for decoration and manufacturer's product application instructions must be strictly followed to obtain finish satisfaction.

*Mold Defense provides extra resistance against the formation of mold, but no product may be considered "mold proof." The most effective way to avoid the formation of mold and mildew in drywall products is to limit or avoid water exposure during storage and construction, and after construction is complete. Used in combination with appropriate design, handling, construction and installation practices, Mold Defense drywall can provide increased mold and mildew resistance on its surface and in its core. ASTM D3273 is the "Standard Test Method for Resistance to Growth of Mold on the Surface of Interior Coatings in an Environmental Chamber" and is performed under controlled, laboratory conditions. Actual storage, handling, construction and installation conditions may vary from the environment created in the independent lab, and the use of the product in actual conditions may not replicate the ASTM results.



CONTINENTAL™

CONTINENTAL BUILDING PRODUCTS

USA (800) 237-5505
Canada (866) 649-7786
www.continental-bp.com

Physical Characteristics

Core: Non-combustible, dimensionally stable, inert gypsum

Paper: 100% recycled; Face paper coated with a specially formulated skim-coat material; Edges = ivory, back = gray

Long Edges: Tapered

Asbestos free and GREENGUARD GOLD certified

Standards and Codes

Formulated to perform in accordance with ASTM C1396/C1396M, Section 5, Gypsum Wallboard (factory-finished per ASTM C840 Level 5) and ASTM C1629, Surface Abrasion Level 3; and CAN/CSA-A82.27-M.

Technical Specifications

UL classified for surface burning (File No. R16102) (per ASTM E84 and CAN/ULC-S102) Flame spread = 0; Smoke developed = 0; Meeting IBC, Section 803.1, Class A

Core combustibility (per ASTM E136) Non-combustible

Mold and mildew resistant (10 out of 10 score, ASTM D3273)*

Installation

Install according to Gypsum Association GA-216 or ASTM C840. Rapid Deco joint compound should be used for best match to Rapid Deco drywall. Refer to GA-214 for more finishing recommendations.

Painting and Decorating

A jobsite mock-up shall be used to determine the level of workmanship needed at each stage of finishing. It is recommended that a visual inspection be done prior to painting to confirm that proper finishing practices have been followed to avoid anomalies in the painting and decorating process. A flat drywall primer with a minimum volume solids content of 34% is recommended. Under no circumstances should an all-in-one paint and primer or a sealer-type primer be used.

Handling Recommendations

Stack flat, keep dry and lift (do not drag) to avoid scuffing. Avoid damage to edges. For detailed recommendations, refer to GA-216 and GA-801.

Safety Precautions

Wear safety glasses and NIOSH-approved respirators during cutting, breaking, rasping or other dust-producing activities.

Safety Data Sheets (SDS) are available for all Continental products upon request.

Available Sizes:

Nominal thickness	1/2 in.
Nominal width	4 ft.
Standard length	10 ft. and 12 ft. (other lengths available by special order)
Nominal weight	1.8 lbs./ft. ²

